

International Mobile Numbers and Other Special Numbers

The following explains how to add international mobile numbers* or large groups of custom numbers to the Special Numbers table for Metropolis Technologies' Telemangement systems.

1. Select the applicable rate tab from the Rate Template spreadsheet to edit your rates. See following samples.

Special Numbers

	A	B	C	D	E	F	G
1	<p>Note: These are typical US default special numbers. You may add to this list, if applicable (NO SPACES IN DESCRIPTIONS). Following is the list of Classes: EMG - Emergency LOC - Local LTOLL - Local Toll STATE - Instate (Intrastate) LD - Long Distance (Interstate) INT - International OTH1 - Other Category OTH2 - Other Category</p>						
2				Increments		Actual Cost Rates	
3	Area Code and/or Exchange	Description	Class	Initial Seconds	Additional Seconds	First Secs Actual	Additional Secs Actual
4	911	Emergency	EMG	60	60	0.00	0.00
5	411	Information	LOC	60	60	0.25	0.25
6	1411	Information	LTOLL	60	60	0.25	0.25
7	1888	TollFree	LD	60	60	0.00	0.00
8	1877	TollFree	LD	60	60	0.00	0.00
9	1866	TollFree	LD	60	60	0.00	0.00
10	1855	TollFree	LD	60	60	0.00	0.00
11	1800	TollFree	LD	60	60	0.00	0.00
12	1202	DC_Local	LOC	60	60	0.00	0.00
13	1703555	VA_Common	LOC	60	60	0.00	0.00
14	1703	VA_Remaining	LD	60	60	0.00	0.00
15		TollFree	LOC	60	60	0.00	0.00
16	800	TollFree	LOC	60	60	0.00	0.00
<p>Standard Domestic Rates Special Numbers International Rates International Mobile Rates-SN</p>							

International Mobile Rates

	A	B	C	D	E	F	G
1	Insert additional rows as necessary. (NO SPACES IN DESCRIPTIONS)						
2				Increments		Actual Cost Rates	
3	Country Code/Exchange	Description	Class	Initial Seconds	Additional Seconds	First Secs Actual	Additional Secs Actual
4	0117940	Abkhazia-MOB	INT	60	60	0.00	0.00
5	0119375	Afghanistan-MOB	INT	60	60	0.00	0.00
6	0119377	Afghanistan-MOB	INT	60	60	0.00	0.00
7	01193700	Afghanistan-MOB	INT	60	60	0.00	0.00
8	01193707	Afghanistan-MOB	INT	60	60	0.00	0.00
9	01193786	Afghanistan-MOB	INT	60	60	0.00	0.00
10	01193788	Afghanistan-MOB	INT	60	60	0.00	0.00
11	01193797	Afghanistan-MOB	INT	60	60	0.00	0.00
12	01193799	Afghanistan-MOB	INT	60	60	0.00	0.00
13	01135567	Albania-MOB	INT	60	60	0.00	0.00
14	01135568	Albania-MOB	INT	60	60	0.00	0.00
15	01135569	Albania-MOB	INT	60	60	0.00	0.00
16	01121361	Algeria-MOB	INT	60	60	0.00	0.00
17	0112137	Algeria-MOB	INT	60	60	0.00	0.00
18	01121398	Algeria-MOB	INT	60	60	0.00	0.00
19	01121399	Algeria-MOB	INT	60	60	0.00	0.00
20	0113763	Andorra-MOB	INT	60	60	0.00	0.00
21	01124491	Angola-MOB	INT	60	60	0.00	0.00
22	01124492	Angola-MOB	INT	60	60	0.00	0.00
23	01124495	Angola-MOB	INT	60	60	0.00	0.00
24	011264772	Anguilla-MOB	INT	60	60	0.00	0.00

You may use formulas to calculate your markups and/or surcharges for ProfitWatch. The example below reflects an actual cost of .79 per 20 second interval with a charge of the cost + a 60% markup + \$1 surcharge for the first 20 seconds and the cost + a 60% markup for each additional 20 seconds.

Increments		Actual Cost Rates		Guest Rates	
Initial Seconds	Additional Seconds	First Secs Actual	Additional Secs Actual	First Secs Staff/Guest	Additional Secs Staff/Guest
20	20	0.79	0.79	=F2	+(F2*0.6) +1
60	60	0.25	0.25	0.50	0.50
60	60	0.25	0.25	0.50	0.50
60	60	1.00	1.00	2.00	2.00
60	60	0.00	0.00	0.00	0.00
60	60	0.00	0.00	0.00	0.00

Time Increment → 20
Cost → 0.79
Cost → 0.25
+ percentage of Cost → +(F2*0.6)
+ Surcharge → +1

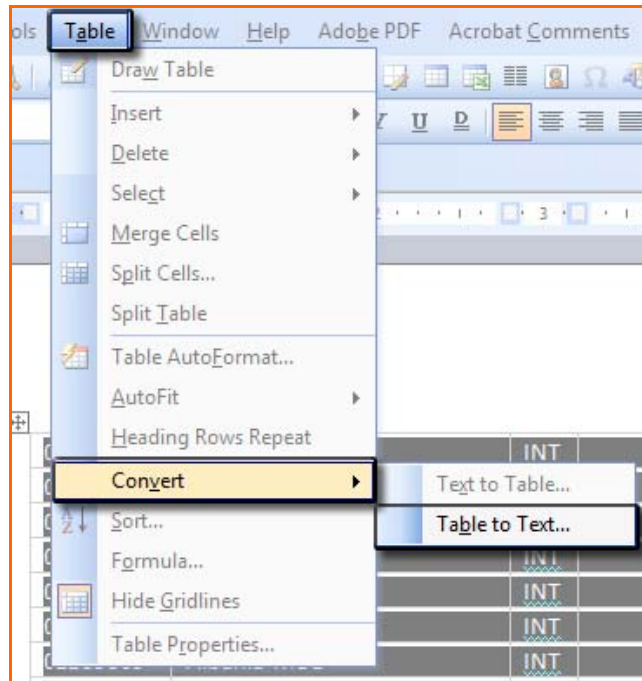
To add a surcharge only, include the amount of the surcharge in the cost of the first minute (or applicable time interval).

- When you have finished editing, select all of your cells, **excluding** the header row, then copy and paste into a Word document.

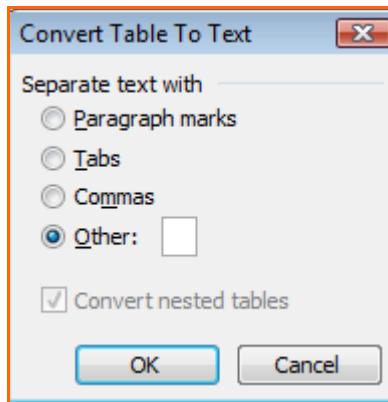
	A	B	C	D	E	F	G
1	Insert additional rows as necessary. (NO SPACES IN DESCRIPTIONS)						
2				Increments		Actual Cost Rates	
3	Country Code/Exchange	Description	Class	Initial Seconds	Additional Seconds	First Secs Actual	Additional Secs Actual
4	0117940	Abkhazia-MOB	INT	60	60	0.00	0.00
5	0119375	Afghanistan-MOB	INT	60	60	0.00	0.00
6	0119377	Afghanistan-MOB	INT	60	60	0.00	0.00
7	01193700	Afghanistan-MOB	INT	60	60	0.00	0.00
8	01193707	Afghanistan-MOB	INT	60	60	0.00	0.00
9	01193786	Afghanistan-MOB	INT	60	60	0.00	0.00
10	01193788	Afghanistan-MOB	INT	60	60	0.00	0.00
11	01193797	Afghanistan-MOB	INT	60	60	0.00	0.00
12	01193799	Afghanistan-MOB	INT	60	60	0.00	0.00
13	01135567	Albania-MOB	INT	60	60	0.00	0.00
14	01135568	Albania-MOB	INT	60	60	0.00	0.00
15	01135569	Albania-MOB	INT	60	60	0.00	0.00
16	01121361	Algeria-MOB	INT	60	60	0.00	0.00
17	0112137	Algeria-MOB	INT	60	60	0.00	0.00
18	01121398	Algeria-MOB	INT	60	60	0.00	0.00
19	01121399	Algeria-MOB	INT	60	60	0.00	0.00
20	0113763	Andorra-MOB	INT	60	60	0.00	0.00
21	01124491	Angola-MOB	INT	60	60	0.00	0.00
22	01124492	Angola-MOB	INT	60	60	0.00	0.00
23	01124495	Angola-MOB	INT	60	60	0.00	0.00
24	011264772	Anguilla-MOB	INT	60	60	0.00	0.00

- Select the entire table. Then go to **Tables | Convert | Table to Text**.

0117940	Abkhazia-MOB	INT	20	20	0.79
0119375	Afghanistan-MOB	INT	15	15	0.59
0119377	Afghanistan-MOB	INT	60	60	0.45
01193700	Afghanistan-MOB	INT	30	30	0.64
01135567	Albania-MOB	INT	10	10	0.48
01135568	Albania-MOB	INT	20	20	0.45
01135569	Albania-MOB	INT	15	15	0.83
0113763	Andorra-MOB	INT	60	60	0.37
01124491	Angola-MOB	INT	30	30	0.89
01124492	Angola-MOB	INT	10	10	0.95
011264772	Anguilla-MOB	INT	20	20	0.78
0112687	Antigua_Barbuda-MOB	INT	15	15	0.13
0115415	Argentina-MOB	INT	60	60	0.55
01137455	Armenia-MOB	INT	30	30	0.49
011614	Australia-MOB	INT	10	10	0.59
01143650	Austria-MOB	INT	20	20	0.45
01143660	Austria-MOB	INT	15	15	1.25
01199450	Azerbaijan-MOB	INT	60	60	0.45



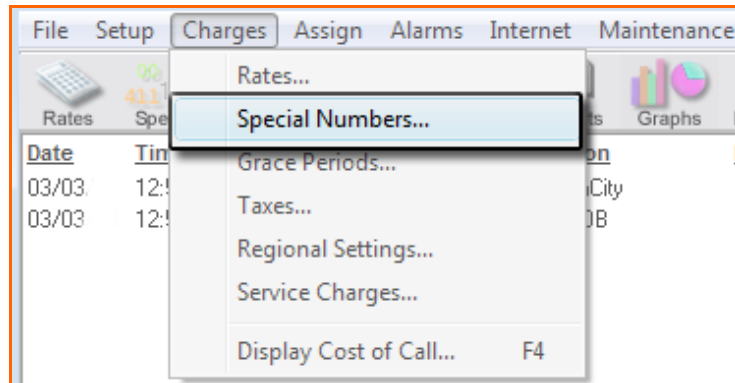
4. Select **Other**, type a space in the box and click **OK**.



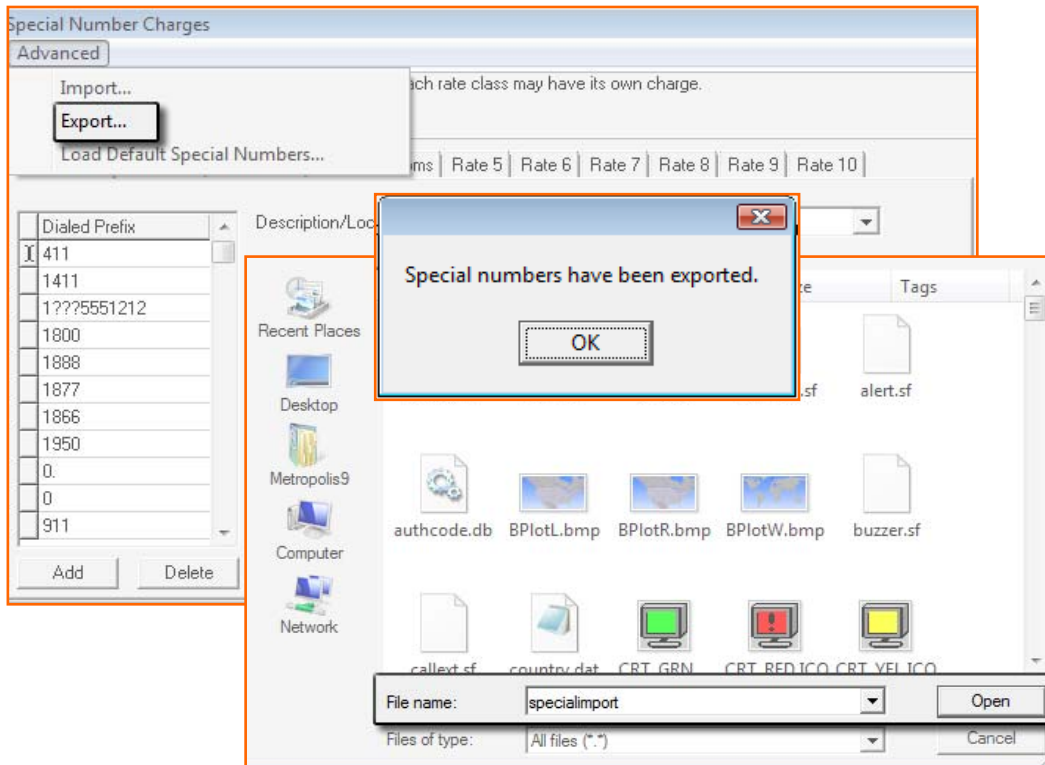
You text will now look like this:

0117940 Abkhazia-MOB INT 20 20 0.79 0.79 2.26 1.26
 0119375 Afghanistan-MOB INT 15 15 0.59 0.59 1.94 0.94
 0119377 Afghanistan-MOB INT 60 60 0.45 0.45 1.72 0.72
 01193700 Afghanistan-MOB INT 30 30 0.64 0.64 2.02 1.02
 01135567 Albania-MOB INT 10 10 0.48 0.48 1.77 0.77
 01135568 Albania-MOB INT 20 20 0.45 0.45 1.72 0.72
 01135569 Albania-MOB INT 15 15 0.83 0.83 2.33 1.33
 0113763 Andorra-MOB INT 60 60 0.37 0.37 1.59 0.59
 01124491 Angola-MOB INT 30 30 0.89 0.89 2.42 1.42
 01124492 Angola-MOB INT 10 10 0.95 0.95 2.52 1.52
 011264772 Anguilla-MOB INT 20 20 0.78 0.78 2.25 1.25
 0112687 Antigua_Barbuda-MOB INT 15 15 0.13 0.13 1.21 0.21
 0115415 Argentina-MOB INT 60 60 0.55 0.55 1.88 0.88
 01137455 Armenia-MOB INT 30 30 0.49 0.49 1.78 0.78

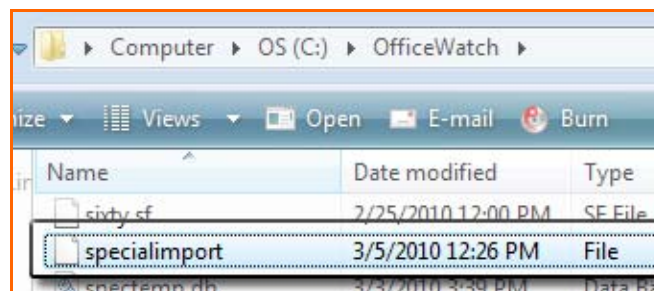
- To export the special numbers list: from the main screen, go to **Charges | Special Numbers**.



- Select **Advanced | Export**. Type “**specialimport**” into the File name and click **Open**, then click **OK** to the completed popup message.



- Browse to your Metropolis application folder and double-click “**specialimport.**” Windows will prompt you to “Choose the program you want to use to open this file” locate **Notepad** and click **OK**.



- Position your cursor at the last line and paste the data from the Word doc. Click the “X” to exit and click **Save**.

```

specialimport - Notepad
File Edit Format View Help
411 Information LD 60 60 0.00 0.00 0.00 0.00 0.00 0.00 0.00 0.00 0.00 0.00 0.00
1411 Information LD 60 60 0.00 0.00 0.00 0.00 0.00 0.00 0.00 0.00 0.00 0.00 0.00
1???5551212 LongDistInfo LD 60 60 0.00 0.00 0.00 0.00 0.00 0.00 0.00 0.00 0.00 0.00 0.00
1800 TollFree LD 60 60 0.00 0.00 0.00 0.00 0.00 0.00 0.00 0.00 0.00 0.00 0.00
1888 TollFree LD 60 60 0.00 0.00 0.00 0.00 0.00 0.00 0.00 0.00 0.00 0.00 0.00
1877 TollFree LD 60 60 0.00 0.00 0.00 0.00 0.00 0.00 0.00 0.00 0.00 0.00 0.00
1866 TollFree LD 60 60 0.00 0.00 0.00 0.00 0.00 0.00 0.00 0.00 0.00 0.00 0.00
1950 CarrierAccess LD 60 60 0.00 0.00 0.00 0.00 0.00 0.00 0.00 0.00 0.00 0.00 0.00
0. Operator LD 60 60 0.00 0.00 0.00 0.00 0.00 0.00 0.00 0.00 0.00 0.00 0.00
0 OperatorAsst LD 60 60 0.00 0.00 0.00 0.00 0.00 0.00 0.00 0.00 0.00 0.00 0.00
911 Emergency EMG 60 60 0.00 0.00 0.00 0.00 0.00 0.00 0.00 0.00 0.00 0.00 0.00
1900 ValueAdded LD 60 60 4.00 4.00 10.00 10.00 10.00 10.00 10.00 10.00 10.00 10.00 10.00
1976 ValueAdded LD 60 60 4.00 4.00 10.00 10.00 10.00 10.00 10.00 10.00 10.00 10.00 10.00
1???976 ValueAdded LD 60 60 4.00 4.00 10.00 10.00 10.00 10.00 10.00 10.00 10.00 10.00 10
1700 ValueAdded LD 60 60 4.00 4.00 10.00 10.00 10.00 10.00 10.00 10.00 10.00 10.00 10.00
1500 ValueAdded LD 60 60 4.00 4.00 10.00 10.00 10.00 10.00 10.00 10.00 10.00 10.00 10.00

```

- To re-import the new special numbers list: from the main screen, go to **Charges | Special Numbers**.
- Select **Advanced | Import**. Locate “**specialimport**,” click **Open**, then click **OK** to the completed popup message. You will now see the new list in the system.

**Metropolis Technologies simply provides this document as a helpful starting point to enter international mobile numbers to your system. Metropolis Technologies makes no claims as to the completeness, accuracy or currency of the data list contained herein, and makes no representation of any kind, including, but not limited to, the warranty of the accuracy or fitness for a particular use, nor are any such warranties to be implied or inferred with respect to the information or data furnished herein*

International mobile exchange source:
http://en.wikipedia.org/wiki/List_of_mobile_phone_codes_by_country