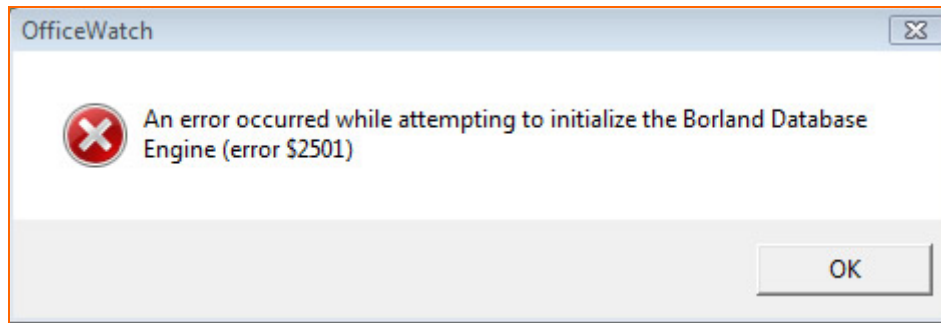


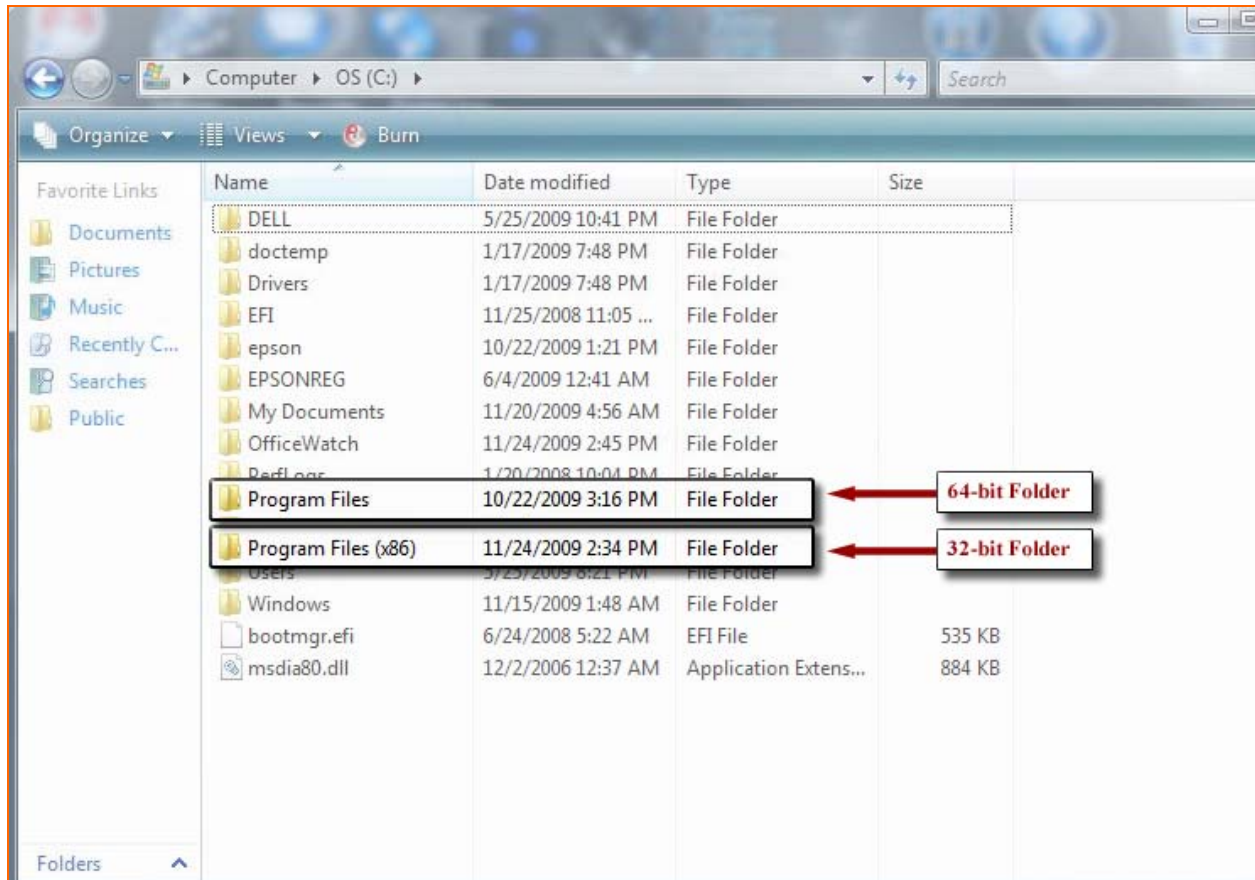
## 64-Bit System Installation for PWLite

The following explains the installation workaround on 64-bit systems for PWLite systems.

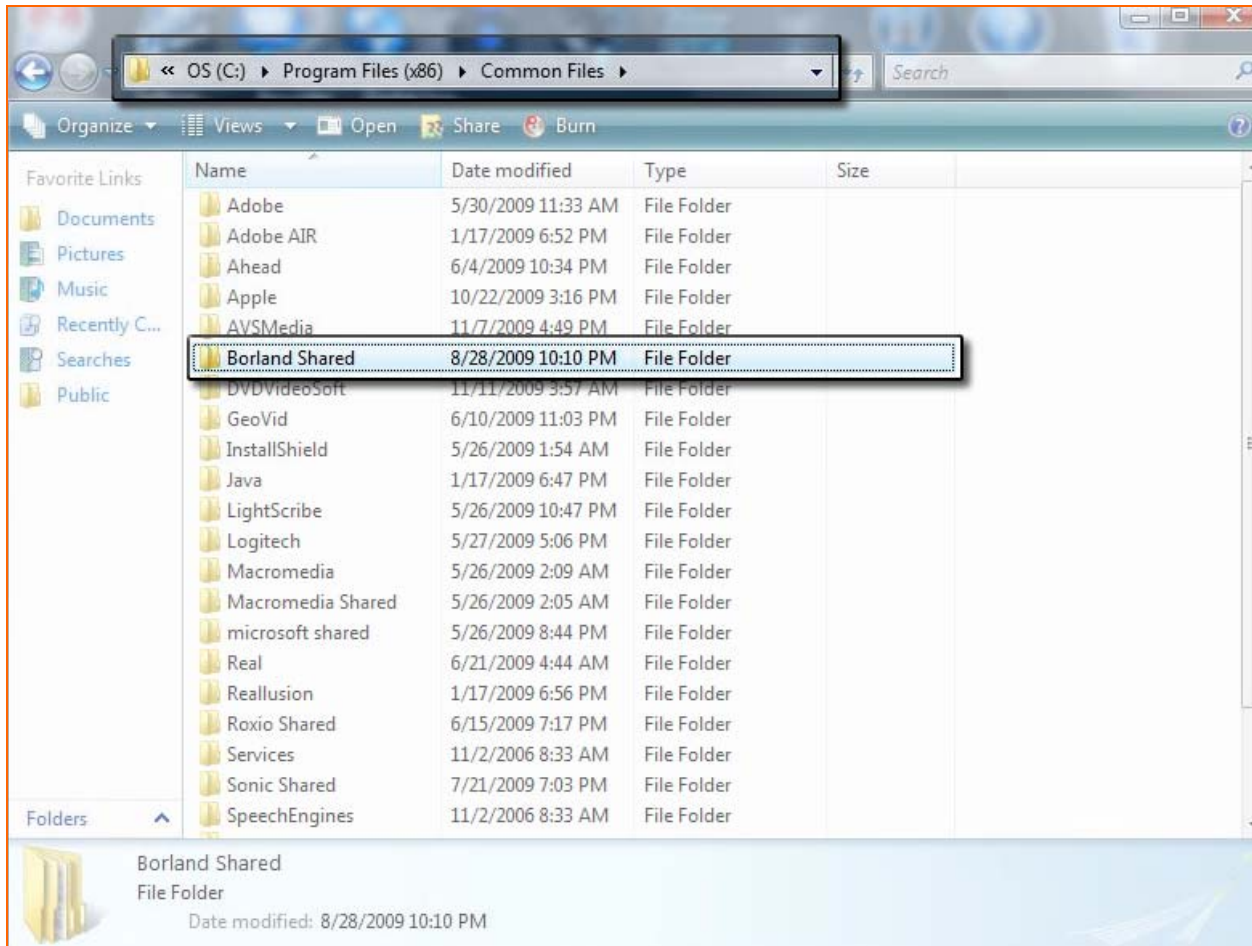
1. If installing on a 64-bit system, you may receive the following error upon trying to open the software.



2. Windows has 2 sets of Program Files on a 64-bit system.



3. Go to (C:) | Program Files (x86) | Common Files. Copy the **Borland Shared** folder to the 64-bit folder (C:) | Program Files | Common Files. Start application as usual.




---

**NOTE:** Please be sure to disable Windows User Account Control on Windows versions Vista, 7, and Server 2003 and above.

---